



The Vasari “COMMAND CENTER” is the standard operator console which consists of a flush mounted enclosure to be inserted between wall studs and includes an internal 110v courtesy outlet to power the included LCD monitor with polished stainless steel enclosure cover and items 1-5 described below which are factory mounted. Also includes remote for LCD monitor set up, as pictured above.

1. Key Switch Station – on/off Authorization Control

This manual, electrical key switch provides a primary means to ensure that operation of the lift is limited to authorized users only. Designed to work in tandem with a digital security key-pad.

2. Digital Security Keypad – Authorization Control

This digital keypad provides keyless security and a means to change codes, etc. to ensure operation of the lift is limited to authorized users only. Designed to work in tandem with a manual key switch station. Code must be entered each time the lift is operated to assure operator is authorized.

3. Constant Pressure (Push and Hold) Operator Pushbutton Station

This style of control station requires that the operator depress the UP or DOWN button throughout the lift’s travel, bringing the lift to an immediate stop whenever the button is released for safety, interference, or any other operational concern.

4. Emergency Stop “Panic” Button Station(s)

The E-stop station is on the command center and additional ship-loose stations can be easily added and located in areas outside the operator’s line of sight to immediately stop the operation of the lift when pressed (by standers-by). Must be manually reset before lift operation can resume.

5. Monitor Screen and Camera(s) – to Watch Lift Area During Operation Digital cameras can be placed in those lift area(s) which are outside the operator’s direct line of sight to aid in the recognition of potential interferences during lift movement.

6. Lift-In-Motion Audible Alarms

Alarms which can be placed in the lift area(s) to provide standers-by an audible warning that the lift is moving and to stand clear to prevent inadvertent contact with the equipment. Volume is adjustable.



7. Motion Detection

These dual-technology sensors have adjustable ranges, and are mounted to the ceiling above and around the lift footprint in areas outside the operator's direct line of sight. Both ultrasonic and infrared technologies are used to stop lift movement if a change in room occupancy is sensed during operation.

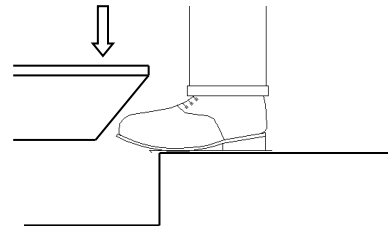


8. 18" Clear Space – Beneath Entire Lift When Landed (4-Post only)

A mechanical feature unique to the 4-Post style lifts is a completely clear 18" crawl space beneath the entire lower deck for personnel safety during operation and maintenance.

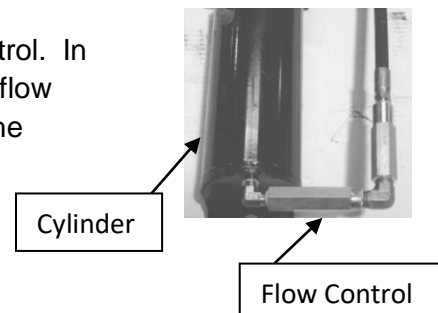
9. Beveled Toe Guard – Platform Perimeter Protection

A mechanical feature added to the perimeter of the lift platform intended to push away, rather than pinch, a shoe which is overhanging a landing by up to 4 inches.



10. Hydraulic Flow Control – Controlled Descent

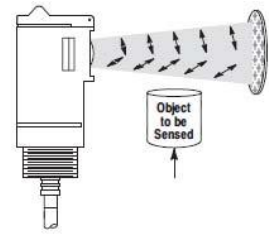
Each lifting cylinder is equipped with a hydraulic flow control. In the event of a sudden rupture in the hydraulic circuit, the flow control automatically meters the flow of oil coming from the cylinder, thereby regulating the lowering of the lift.



NON-STANDARD OPTIONAL FEATURES

11. Photo-Eye Interference Detection– Stops Lift if Beam Broken

A photo eye and reflector are installed on opposite walls approximately 6” up and 6” away from those edges of the lift platform which are outside the operator’s direct line of sight to protect against pinching or crushing items which may be protruding into the path of the lift as it approaches a landing.



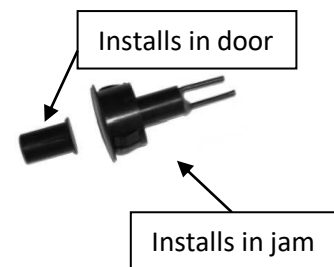
12. Lift-In-Motion Flashing Lights

Alarms which can be placed in the lift area(s) to provide standers-by a visual warning that the lift is moving and to stand clear to prevent inadvertent contact with the equipment.



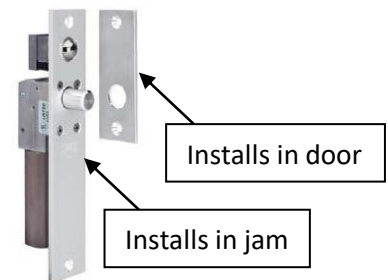
13. Swing Door Status Switch – For Doors Leading Into the Lift Area

Kits which retrofit into most single-swing doors, and include an electrical proximity switch which senses the “status” of the door – whether it is open or closed. If the door is any position other than fully closed, the lift will not operate.



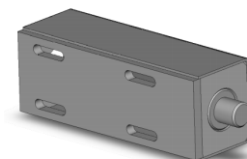
14. Swing Door Interlock Kit – For Doors Leading Into the Lift Area

Electrical Interlock kits retrofit into most single-swing doors, and include a locking mechanism and a status switch. The switch senses if a door is left open and, if so, prevents the lift from operating. The lock automatically engages whenever the lift is in motion to prevent a closed door from being opened.



15. Overhead door interlock kit – For Doors Leading Into the Lift Area

Electrical Interlock kits retrofit into most overhead doors, and include a locking mechanism and a status switch. The switch senses if a door is left open and, if so, prevents the lift from operating. The lock automatically engages whenever the lift is in motion to prevent a closed door from being opened.



NON-STANDARD OPTIONAL FEATURES (cont'd)

16. Overhead door status switch kit – For Doors Leading Into the Lift Area
Electrical switch for most overhead doors. The switch senses if a door is left open and, if so, prevents the lift from operating.



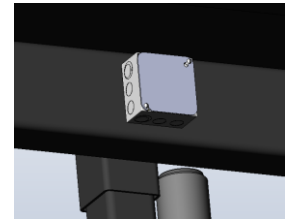
17. Ultrasonic Position Indicator – Locating the Vehicle on the Lift
This electronic device is typically installed on the garage wall at the front of the lift, and its proximity sensor field adjusted to indicate (with Red-Yellow-Green lights) when the vehicle is located fully within the footprint of the lift's lower carriage prior to sending the lift down to the basement / lower level.



18. “Sensing Edge” Interference Detection
Rubber leading edges that contain a pressure switch which, as a result of making contact with an obstruction, activates the switch and stops – or reverses – the downward motion of the lift. Mounted beneath lift platform edges which may be outside the operator's line of sight.



19. Electrical Junction Box – Pre-Mounted to Under side of Canopy
Junction box mounted on under the canopy to accommodate field wiring for lighting, or other 110v power requirements. Includes canopy post modifications if needed to route conductors from platform to the under side of the canopy. Outlet and wiring not included.



20. Electrical Junction Box – Pre-Mounted to Under side of Platform
Junction box mounted on the lift platform to accommodate field wiring for charging systems, or other 110v power requirements. Includes junction box beneath platform and in the platform for access to outlet from above. Outlet and hinged cover included, field wiring required.

